



Plan du rez-de-chaussée

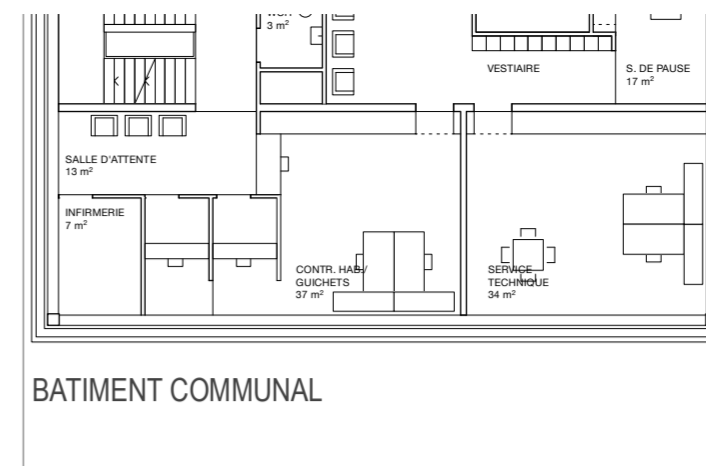
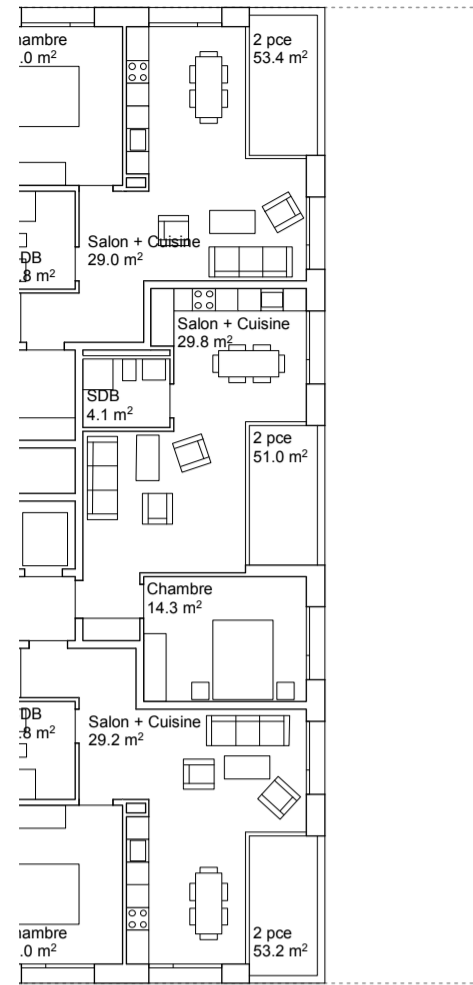
MO : RSSG - Commune de Gruyères
 Construction d'un EMS, Bâtiment communal et parking sous-terrain
 Projet de Pringy



esposito + javet architectes epfl-fas-sia 10 rue des terreaux - 1003 Lausanne t +41(0)21 661 27 05 f +41(0)21 661 27 06 info@esposito-javet.ch

Nom	N°	Phase	Fichier	Echelle	Format	Date initiale	Dessin
Plan rez-de-chaussée EMS	292_200_1	Avant-projet	292_EMS_Plans de base	1:200	A2	16.02.2022	MS 10.08.22

BATIMENT K



BATIMENT COMMUNAL



Plan du 1er étage

Limite PAD 764.00

Falte 762.15 = +15.65

756.65 = +10.15

753.70 = +7.20

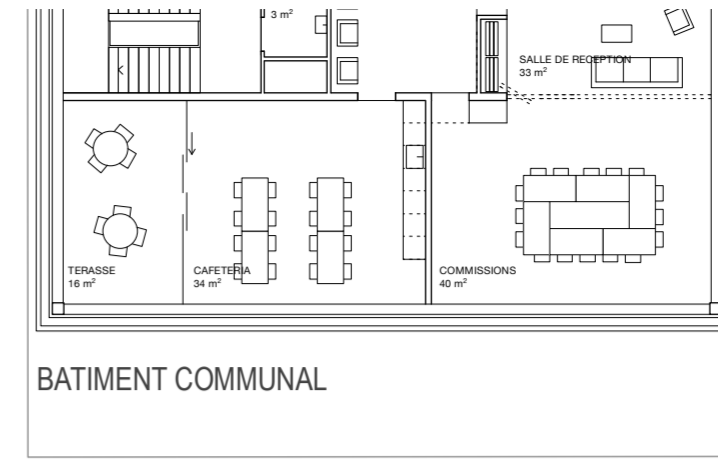
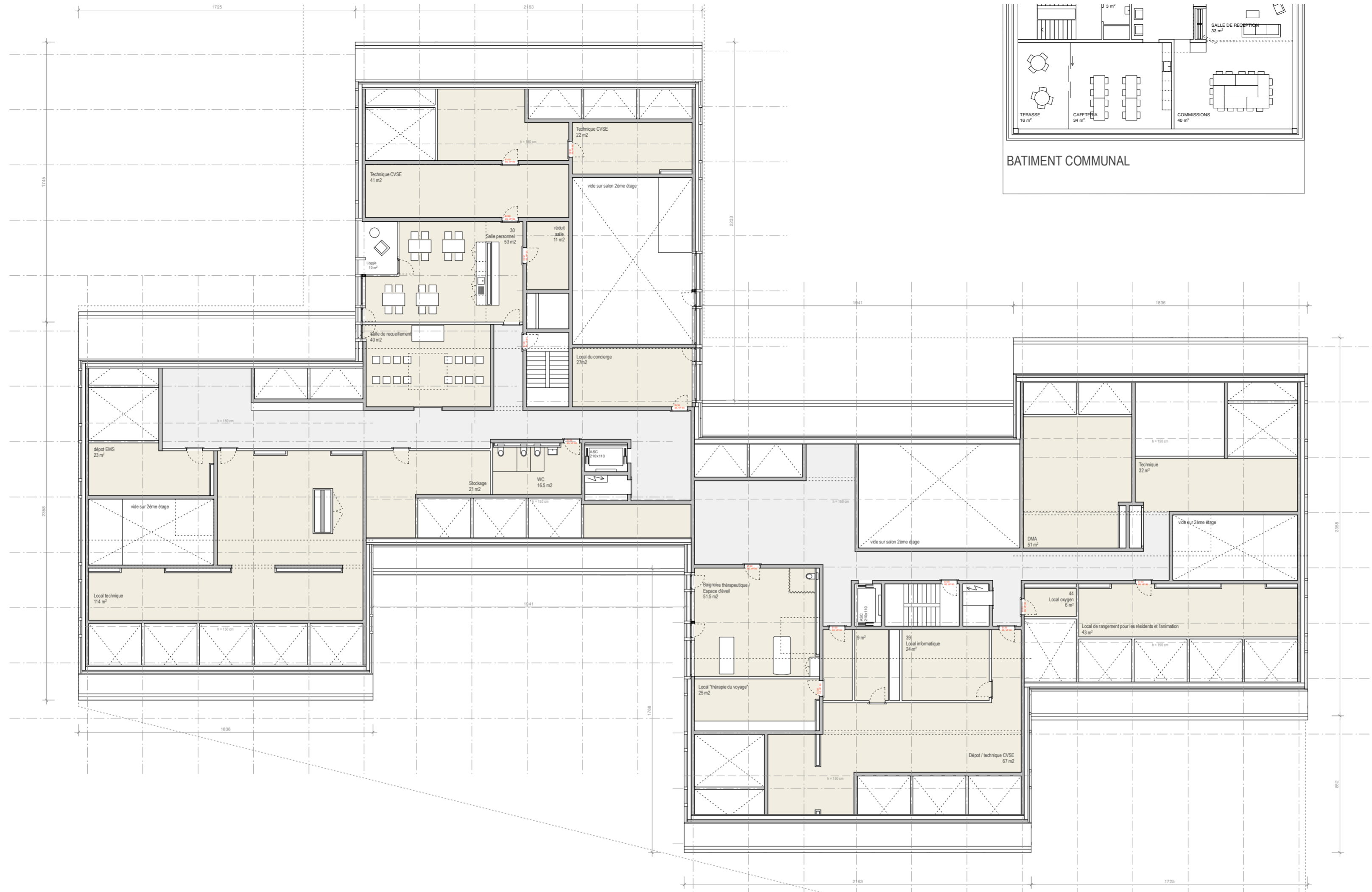
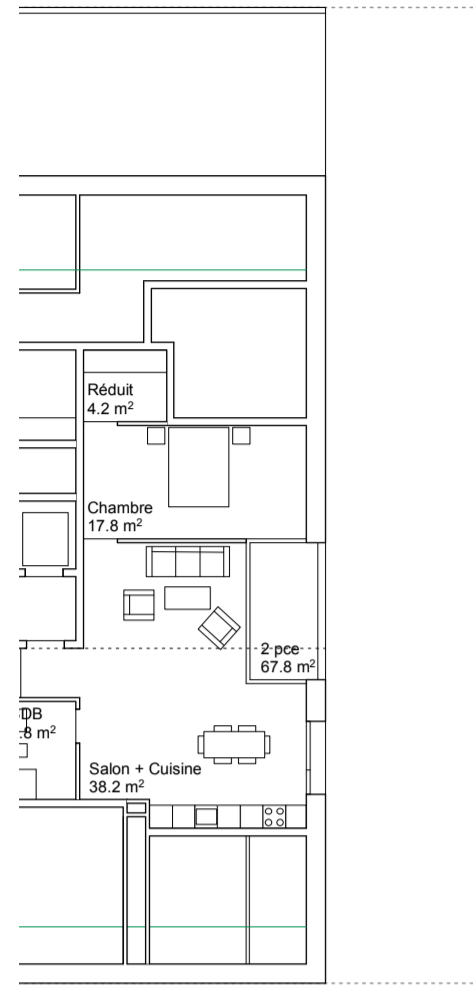
750.70 = +4.25

746.50 = ±0.00



Façade sud

BATIMENT K



Plan des combles

Limite PAD
764.00

Falte
762.15 = +15.65

756.65 = +10.15

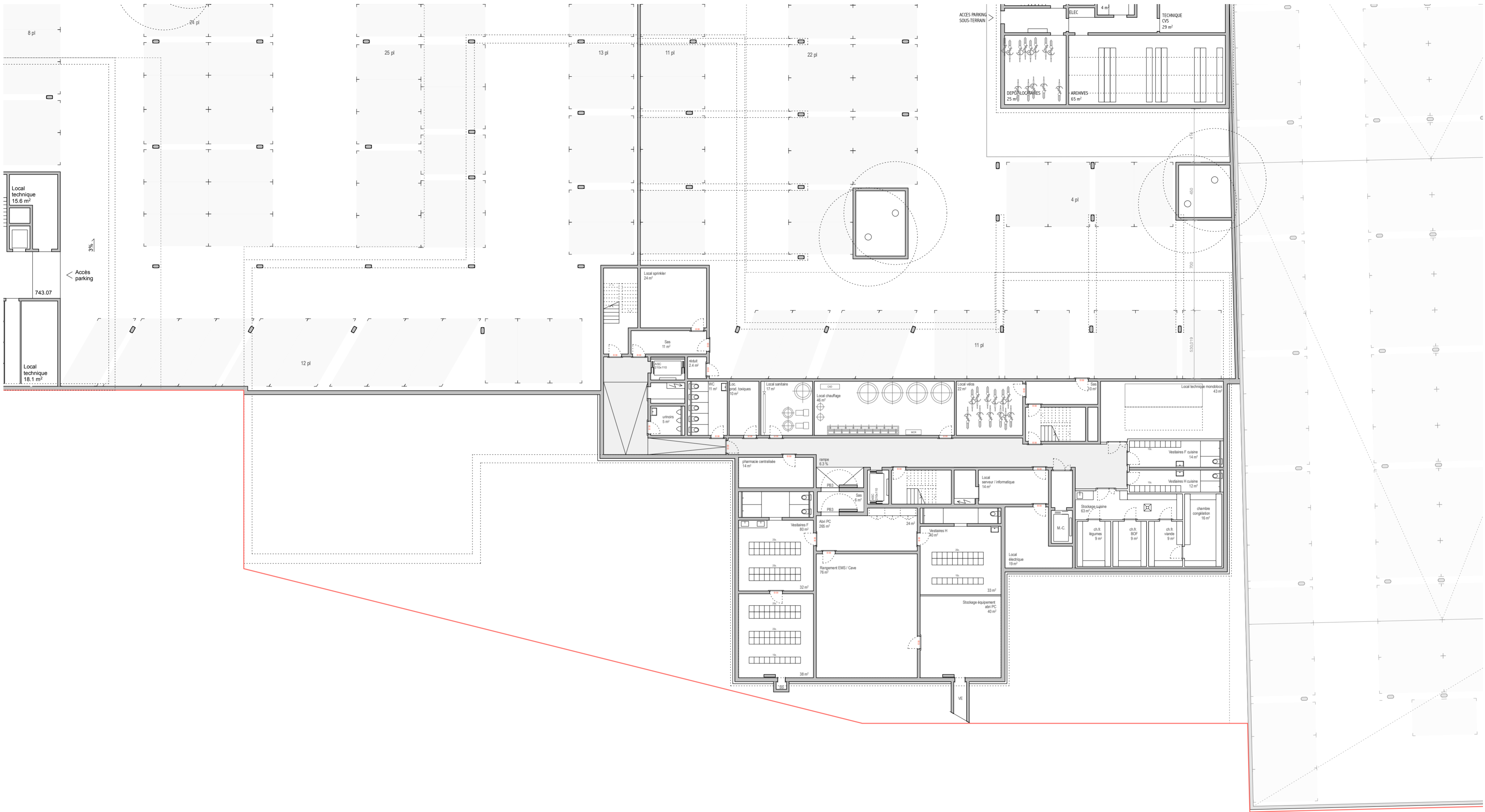
753.70 = +7.20

750.70 = +4.25

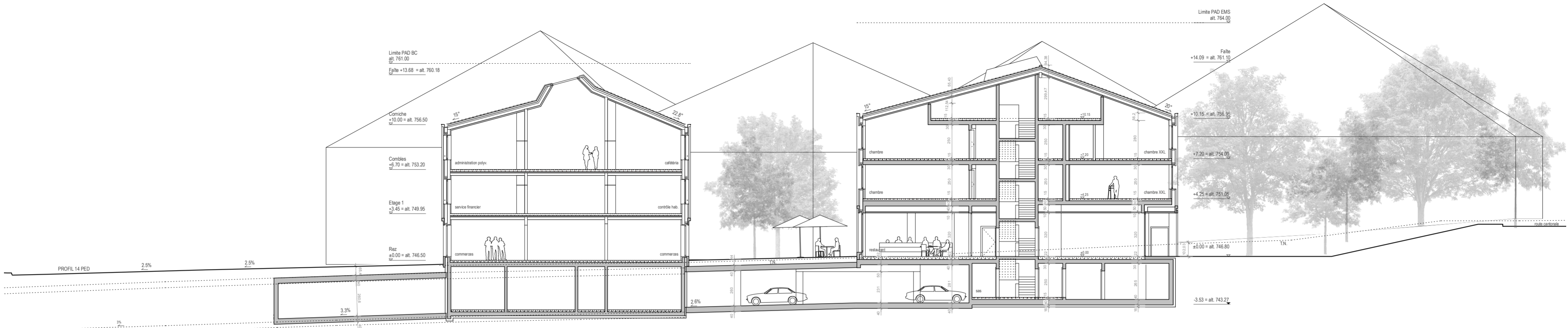
746.50 = ±0.00



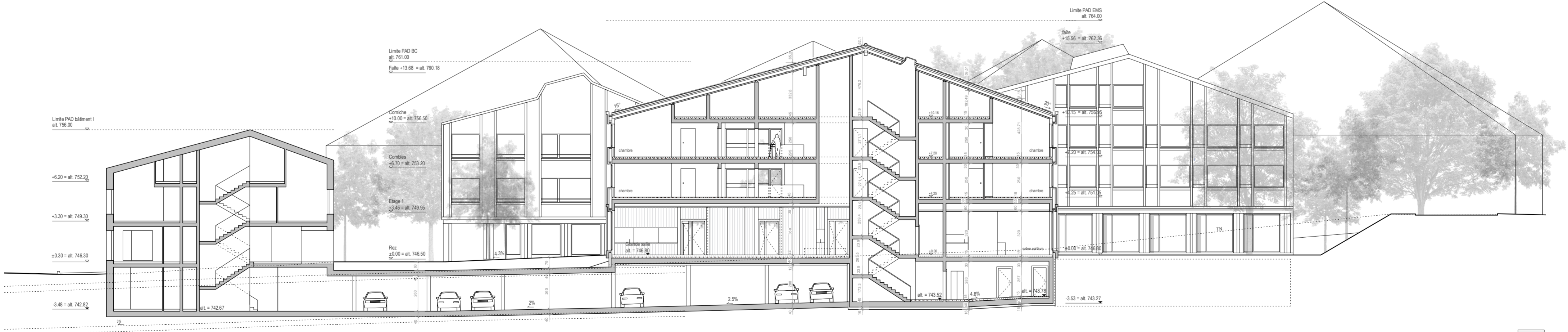
Façade nord



Plan du sous-sol



Coupe A-A



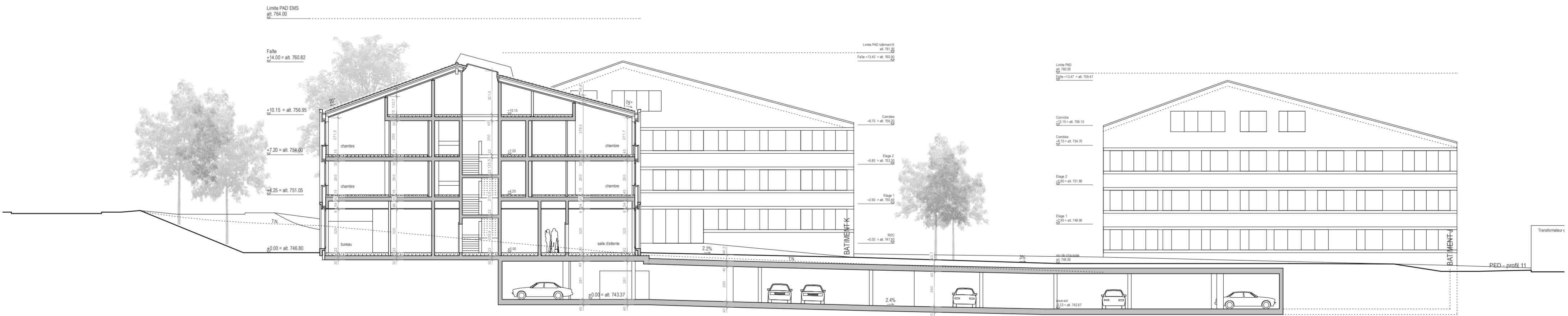
Coupe C-C



Place du village



Salon d'étage EMS



Coupe D-D

